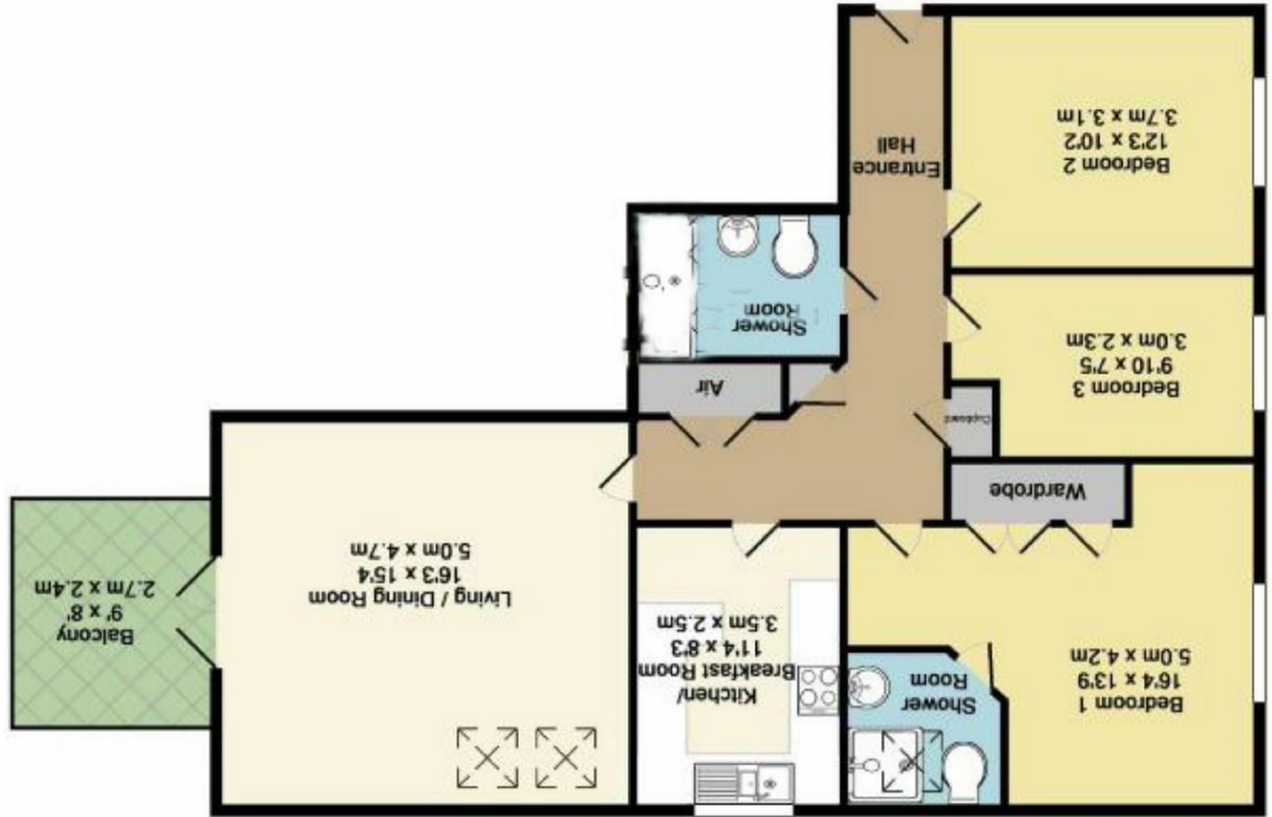


IMPORTANT: There may be omissions in these sales particulars and they do not constitute part of a contract. Floor plans are for representational purposes only and may not be to scale. All measurements including floor area (which may or may not include garage and/or conservatory) are approximate and should not be relied upon. We make no assertion that the property is in good condition or otherwise, nor that any services, appliances or systems are in good working order. Items depicted in photos may not be included. Any reference to tenure has been supplied by the seller and is given in good faith, similarly please check council tax banding and maintenance/ground rent figures as these can change. Potential viewers and purchasers should investigate and/or verify all relevant points and if appropriate, commission experts to report before proceeding.

TOTAL APPROX. FLOOR AREA 959 SQ.FT. (89.1 SQ.M.)  
Whilst every attempt has been made to ensure the accuracy of the floor plan contained here, measurements of doors, windows, rooms and any other items are approximate and no responsibility is taken for any omission, or mis-statement. This plan is for illustrative purposes only and should be used as such by any prospective purchaser. The services, systems and appliances shown have not been tested and no guarantee as to their operability or efficiency can be given.  
Made with Metropix 20217



9 Park Gate, New Milton, BH25 6DH  
Price £350,000

## 9 Park Gate, New Milton, BH25 6DH

- Three Bedrooms
- En Suite & Bathroom
- Living/Dining Rm
- Large Balcony
- Kitchen/Breakfast Rm
- Garage with Power
- Central Location
- Lift Access



### SPACIOUS APARTMENT IN THE HEART OF TOWN!

On this gated development, we are pleased to offer this impressive and sizeable 'Pennyfarthings' three bedroom top/second floor apartment. The property has features including a large balcony overlooking the recreation ground, an en suite to compliment the main bathroom, and a garage with power. Approx 107 years left on lease.